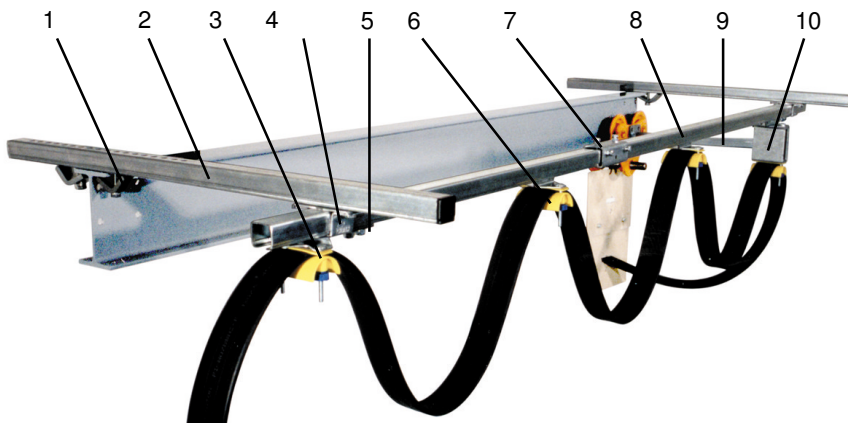
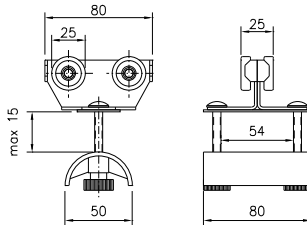
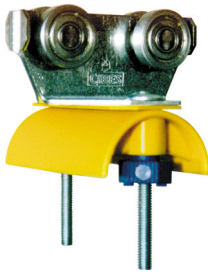


# Cable trolleys for C-rail 30x32 mm. Flat cable

**11-32 GB**  
10.10.11



1. Girder clips
2. Support arm
3. End clamp
4. Support bracket
5. End stop
6. Cable trolley
7. Track coupler
8. C-rail
9. Towing arm
10. Towing trolley



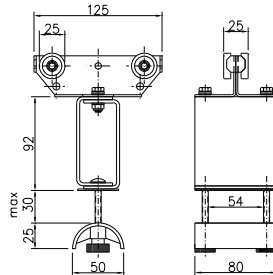
## Cable trolley with 4 wheels for flat cable

**Material:** Galvanized steel plate (body)  
Dust-proof ball bearings (wheels)  
Polyamide (cable clamp and protection plate)

**Cable load, kg:** 20

**Weight, kg:** 0.28

**Article No.:** 11 312



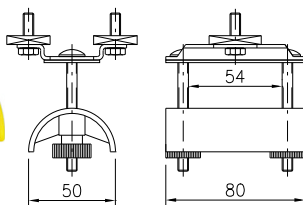
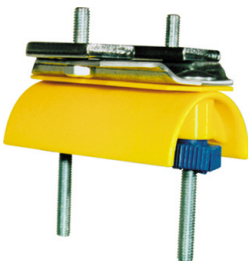
## Towing trolley

**Material:** Galvanized steel plate (body)  
Dust-proof ball bearings (wheels)  
Polyamide (affixing plate for cable clamp)

**Cable load, kg:** 20

**Weight, kg:** 0.6

**Article No.:** 11 767

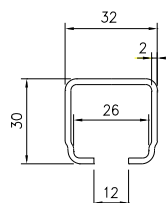


## End clamp

**Material:** Galvanized steel plate (body)  
Polyamide (cable clamp and protection plate)

**Weight, kg:** 0.2

**Article No.:** 11 780



## C-rail

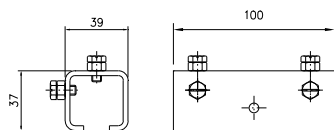
**Material:** Galvanized steel

**Length, mm:** 4000 mm    6000 mm

**Weight, kg:** 6.2            9.3

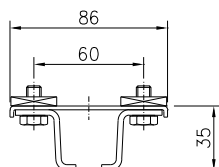
**Article No.:** 11 900        11 801

Specifications subject to change without prior notice



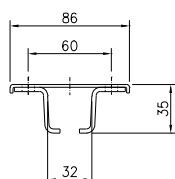
**Track coupler**

Material: Galvanized steel  
 Weight, kg: 0.28  
 Article No.: 11 810



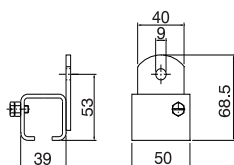
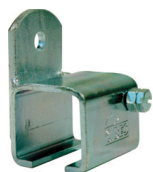
**Support bracket with square nuts**

Material: Galvanized steel  
 Weight, kg: 0.24  
 Article No.: 11 820



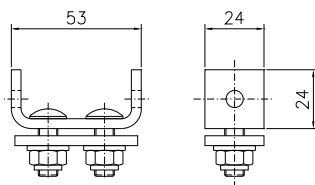
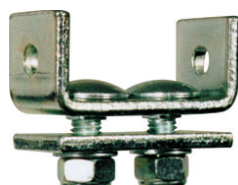
**Support bracket**

Material: Galvanized steel  
 Weight, kg: 0.16  
 Article No.: 11 825



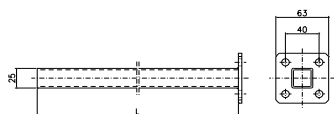
**Support bracket**

Material: Galvanized steel  
 Weight, kg: 0.20  
 Article No.: 11 830



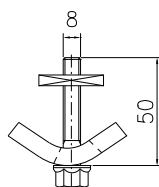
**End stop**

Material: Galvanized steel  
 Weight, kg: 0.13  
 Article No.: 11 841



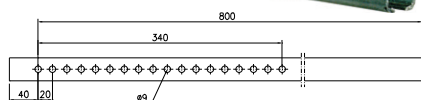
**Towing arm**

Material: Galvanized steel  
 Length, mm: 400      630  
 Weight, kg: 0.6      0.8  
 Article No.: 11 701      11 702



**Girder clips (two for each support arm)**

Material: Galvanized steel  
 Weight, kg: 0.15  
 Article No.: 11 737



**Support arm**

Material: Galvanized steel  
 Length, mm: 800  
 Weight, kg: 1.25  
 Article No.: 11 723